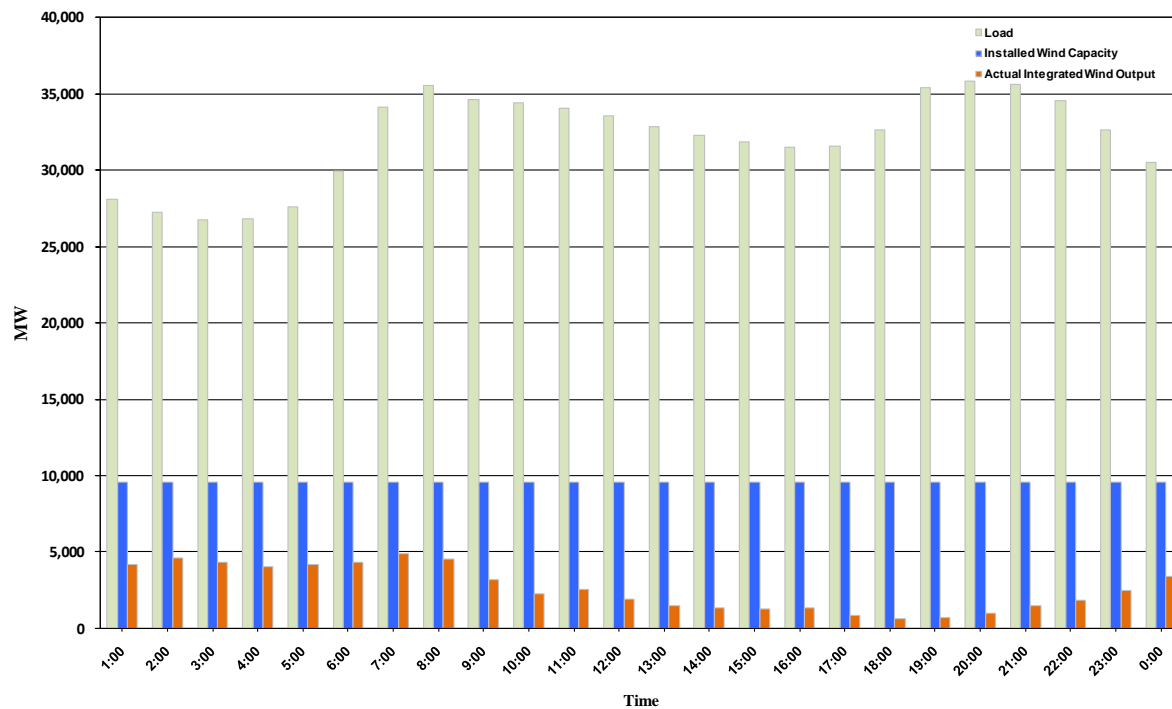




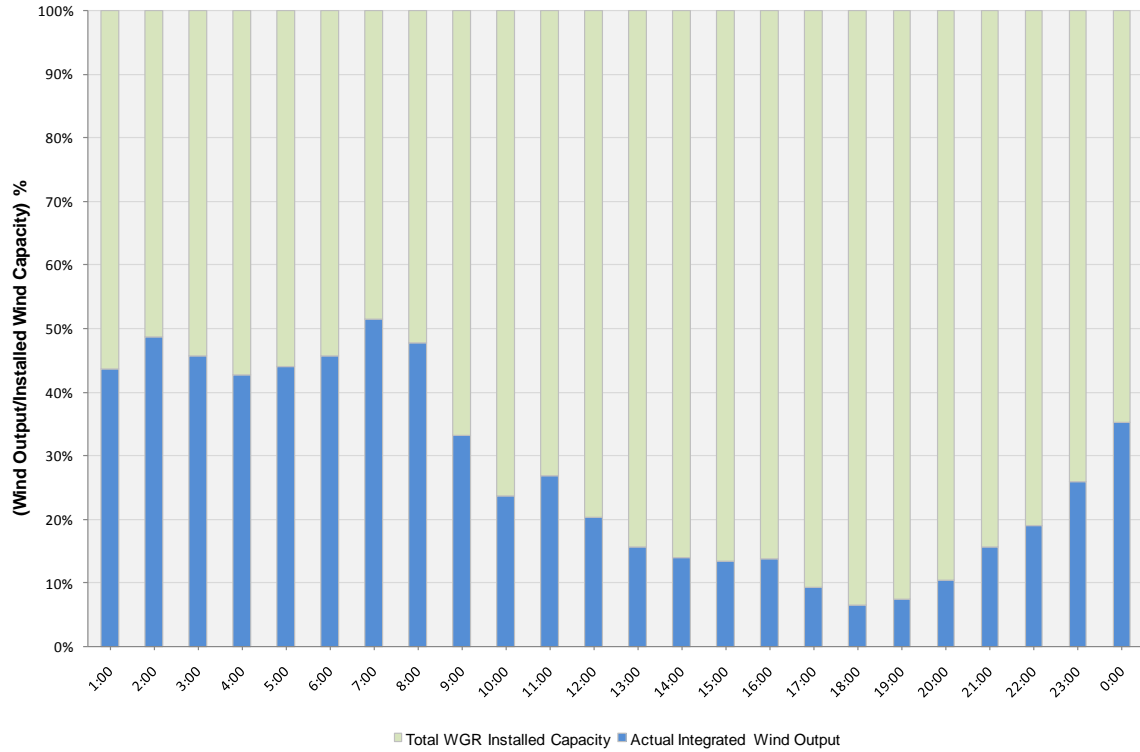
## ERCOT Grid Operations Wind Integration Report: 01/18/11

Peak Load	<b>35,803 MW</b>
Load Peak Hour	<b>20</b>
Wind Record 12/11/10	<b>7,227 MW</b>
Max Wind Value	<b>5,090 MW</b>
Wind Peak Hour	<b>07:01:00</b>
Wind Integration %	<b>14.30</b>

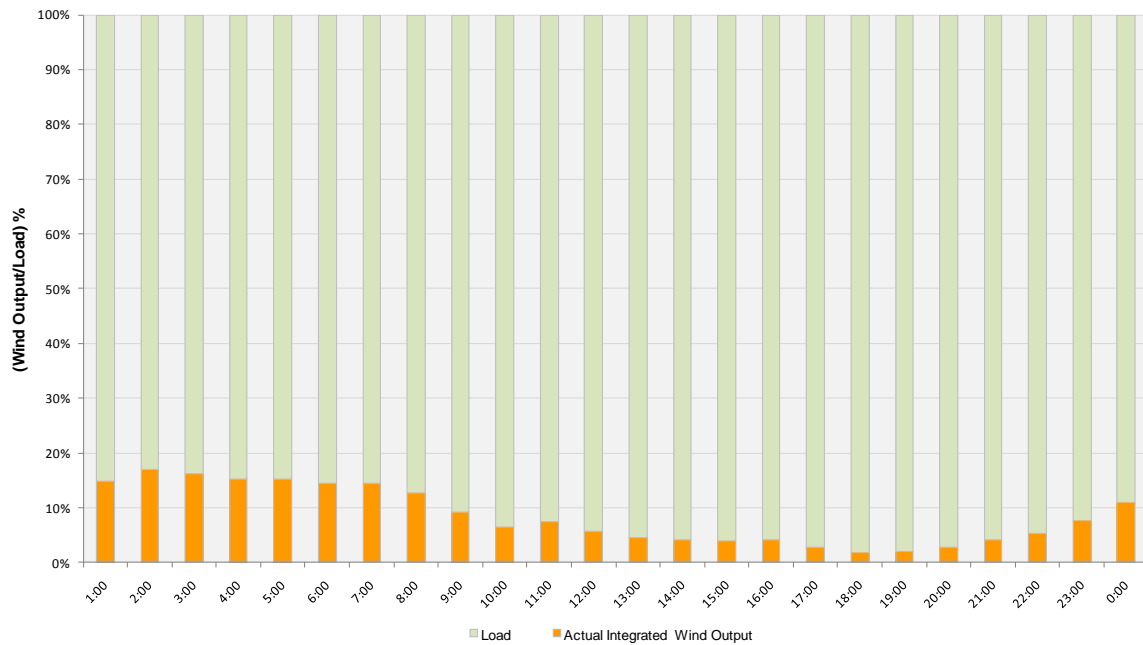
Hourly Average Actual Load vs. Actual Wind Output  
01-18-2011



**Actual Wind Output as a Percentage of the Total Installed Wind Capacity**  
**01-18-2011**



**Actual Wind Output as a Percentage of the ERCOT Load**  
**01-18-2011**



**ERCOT Load vs. Actual Wind Output 01/11/11 - 01/18/11**